

Ensō

Interpretation and Composition of Executable Specification Languages

Goals:

- don't design programs, program the design
- eliminate boilerplate

Challenges:

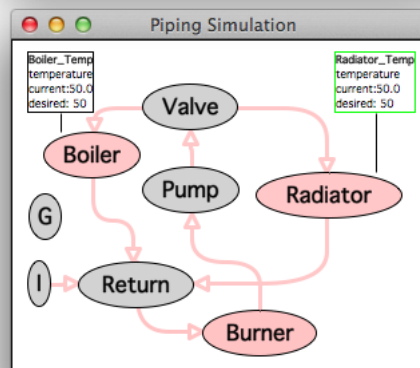
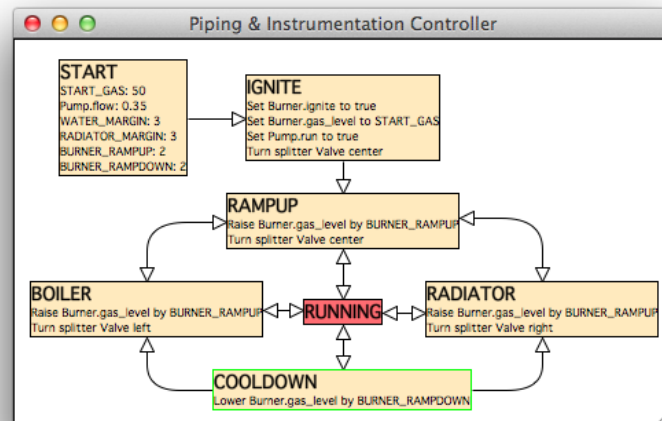
- modular language development
- compositional semantics
- self-hosting

Solution:

- languages for GUI, Web, security, data, syntax, diagram editors, ...
- integrated external DSLs
- interpretation with partial evaluation (no code generation)

Case-study: piping and instrumentation

- Interactive simulation of piping model and controller



• Lines of code:

- Heating model: 53
- DSL: 357
- Simulator: 486